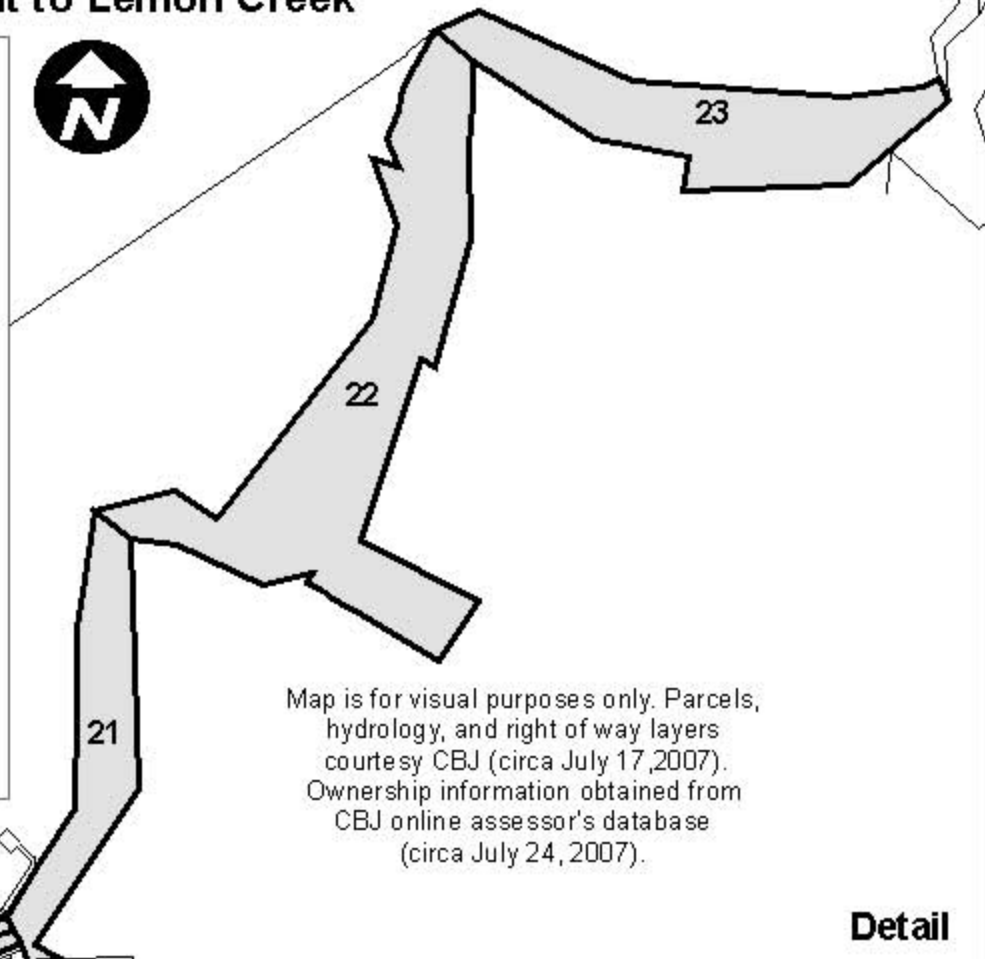


Property Ownership Adjacent to Lemon Creek

Ownership

- 1 STATE OF ALASKA
- 2 NOWELL AVENUE DEVELOPMENT
- 3 LACANO INVESTMENTS LLC
- 4 GRANITE MOUNTAIN PROPERTIES
- 5 GRANITE MOUNTAIN PROPERTIES
- 6 BREEZE-IN CORPORATION
- 7 NORTHERN KETA CAVIAR INC
- 8 ANDREW & JUDY CAMPBELL
- 9 JERRY & MAYUMI GABOR
- 10 JEREMY & CYNTHIA HAMEY
- 11 HILDRE SAND & GRAVEL CO
- 12 JAMES & ADELA HAMEY
- 13 COOGAN GENERAL LLC
- 14 COOGAN GENERAL LLC
- 15 SPACE UNLIMITED INC
- 16 HUGH GRANT
- 17 THOMAS HORN LIVING TRUST
- 18 CHANNEL LANDFILL INC
- 19 RALPH HORECNY (RSH CO)
- 20 ANIAKCHAK INC
- 21 CITY & BOROUGH OF JUNEAU
- 22 SECON INC
- 23 TLINGIT HAIDA REGIONAL HOUSING



Map is for visual purposes only. Parcels, hydrology, and right of way layers courtesy CBJ (circa July 17, 2007). Ownership information obtained from CBJ online assessor's database (circa July 24, 2007).

Detail

